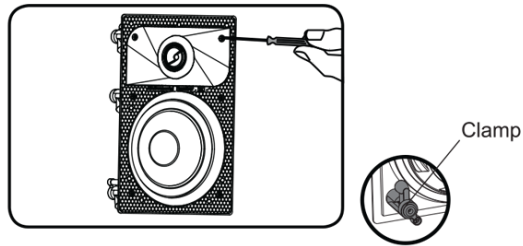
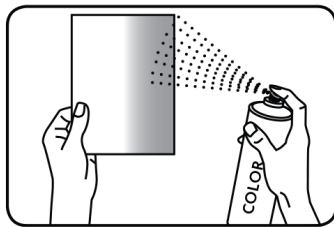


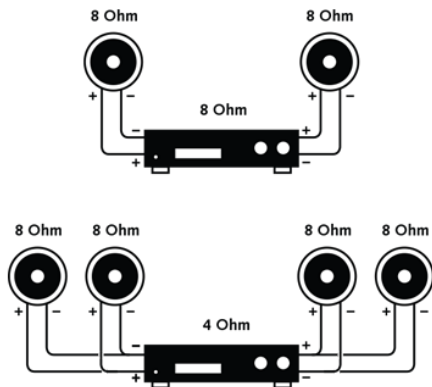
- Place the speaker into the cutout and tighten the clamp screws until you can feel the frame of the speaker pressing firmly against the ceiling. Do not over tighten.



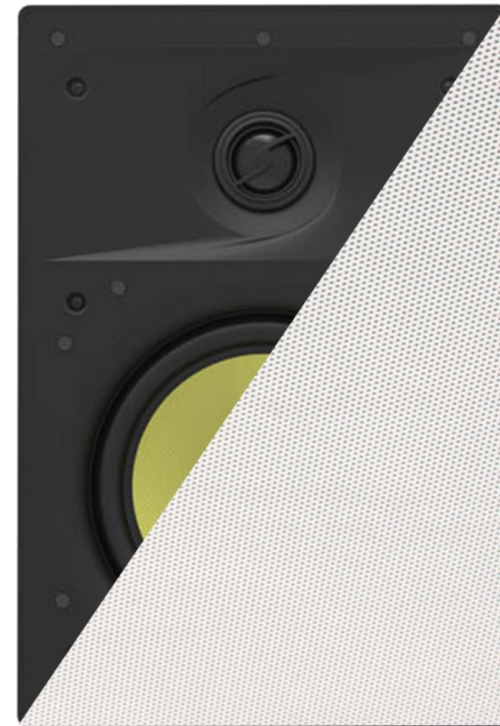
- If you need to paint the grill to match the ceiling, you can simply coat the grill with even strokes to eliminate filling in the holes.



#### 4.0 Wiring Possibilities



## In-Wall 6.5” Speaker with Frameless Magnetic Grill



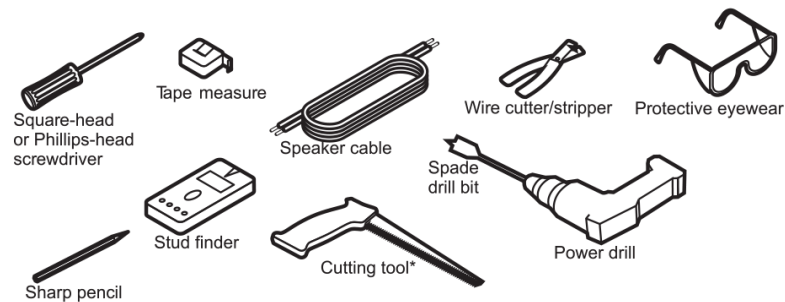
Model - W6MG  
SKU# - .28635

## 1.0 Specifications

- 6.5" Kevlar woofer with rubber surround
- 1.42" Soft dome tweeter
- Tweeter Equalizer:  $\pm 3\text{dB}$
- Magnet Weight: 18 oz
- Frequency Response: 60Hz—20KHz
- Recommended Power: 60 watts
- Impedance: 8 ohms
- Sensitivity (1w/1m): 90dB
- Overall Dimensions (LxWxD): 11.81" x 8.07" x 3.41"

## 2.0 Equipment Needed for Installation

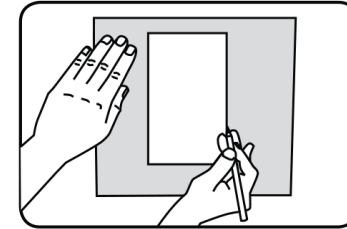
- Speaker cutout template included in box



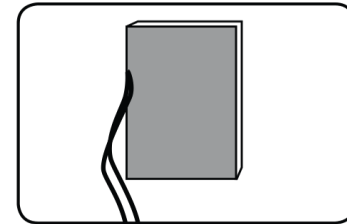
## 3.0 Installation

1. The mounting surface should be between  $3/8$ " and  $1/2$ " thick with at least 3.5" clearance behind the mounting surface. Make sure there are no wall studs or other objects to block the back of the speaker when installed.

2. Use the "speaker cutout template" provided in the box and mark the cutout hole size and location for mounting the speaker.



3. When running the loudspeaker cable from the amplifier to the installation point, ensure that the cable extends out 12" beyond the cutout.



4. When attaching the loudspeaker cable to the speaker, ensure that the polarity is correct. Incorrect polarity can reduce the speakers bass response.

